

DRINKING FOUNTAINS AND SHOWER RANGE 2019

www.ams-products.com.au

Drinking Fountain: A280

Evan Jackson | 08 8277 9382
sales@amsproducts.net.au
www.ams-products.com.au



The Apollo 280 combines all the features, design and versatility of the new BF200 refill fountain with the more traditional features of our standard Apollo range. It comes with the option of the longer basin making the A280 more disabled accessible and user friendly. With its newly designed stainless steel basin and a stainless steel feature front panel, the Apollo 280 is not only practical but very stylish and will compliment any contemporary urban streetscape

Dimensions

- Total Height: 900mm
- Clearance Height: 800mm
- 191mm x 160mm base

Water Receptacle

- 316 stainless steel catchment tray
- Nozzle material 316 stainless steel
- Easy push button water activator

Plumbing

- 1/2 water inlet
- 40mm waste outlet pipe

Finishes

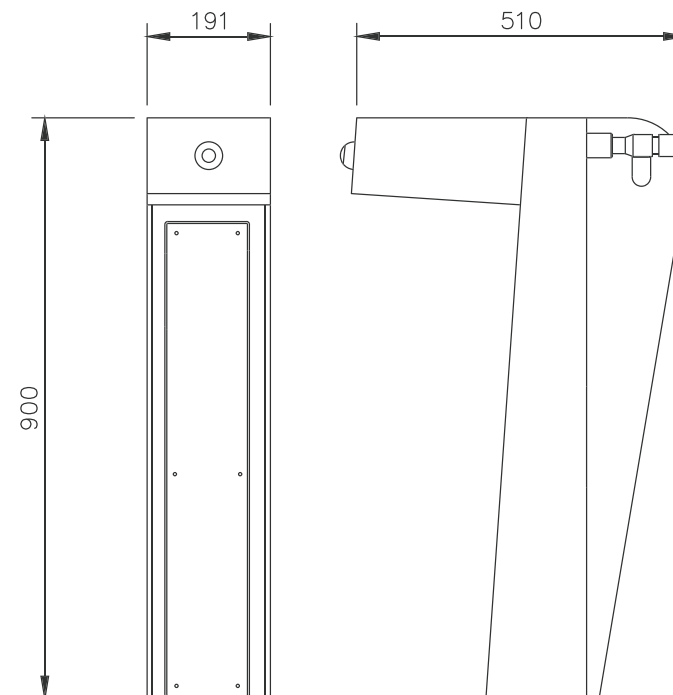
- Primed and Powder coated finish
(Available in many different colours. Please see colour selector)
- Stainless Steel
- Anti graffiti (available on request)

Fixings

- Surface mounted with Dyna bolts or in ground fixings with foundation cage
- All internal bolts
- 316 Stainless steel security screws

Options

- Optional tap and dog bowl
- Optional catchment tray
- Water filter
- Logo or motif
- Longer or shorter basin
- Optional side protection panels



www.urbanff.com.au

Urban
fountains + furniture

Drinking Fountain: A280W

Evan Jackson | 08 8277 9382
sales@amsproducts.net.au
www.ams-products.com.au



The Apollo 280w is a durable, vandal resistant, wall mounted outdoor disabled accessible fountain. It is just one of our fountains in the Apollo range designed for disabled access. Available as standard in Stainless Steel or you can finish in your choice of powder coat colours

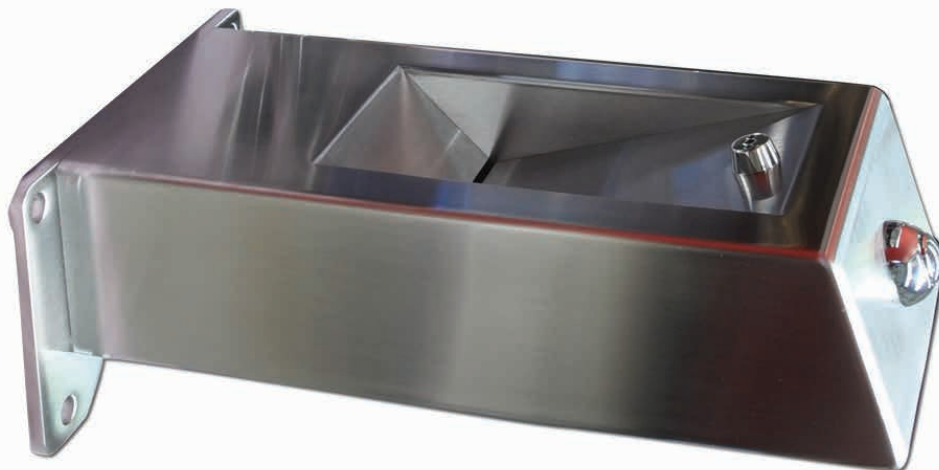
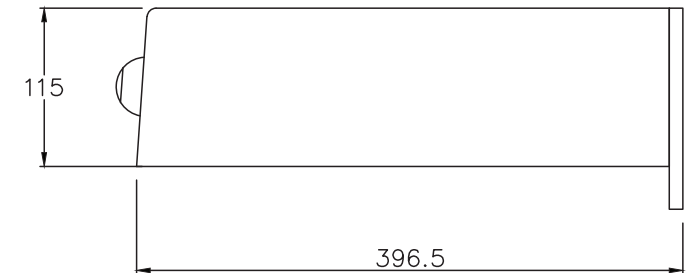
- Dimensions**
- Total Height: variable to suit
 - Width: variable to suit
 - Stainless Steel one piece heavy duty construction

- Plumbing**
- In built water pressure regulator 1/2" inlet
 - 40mm waste outlet pipe
 - Custom S/S filler nozzle

- Finishes**
- Stainless steel
 - Primed and powder coated finish as an option
 - Vandal resistant 316 security screws

- Fixings**
- Wall mounted

- Options**
- Full parts and technical back up service available
 - Service kits available for purchase



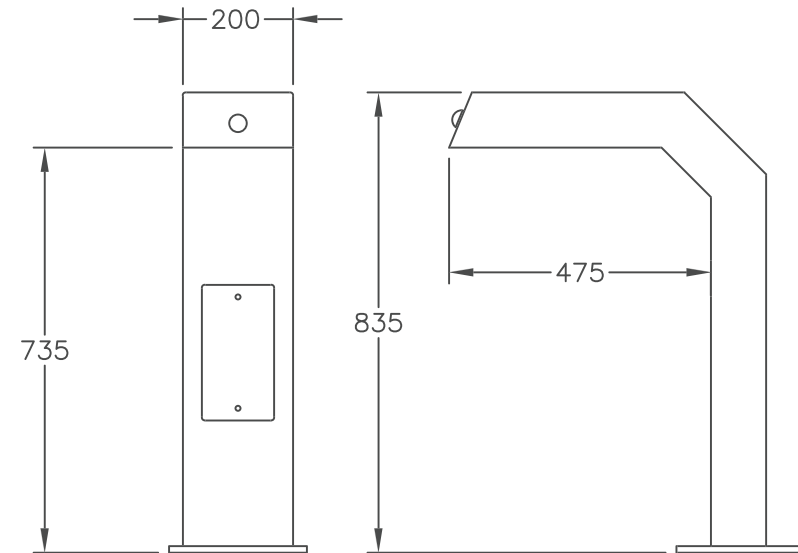
www.urbanff.com.au

Urban
fountains + furniture

Drinking Fountain: Apollo 300

The Apollo 300 is a durable, vandal resistant outdoor disabled accessible fountain. It is just one of our fountains in the Apollo range designed for disabled access.

- Dimensions**
- Total Height: 835mm
 - Clearance Height: 735mm
 - 200mm x 100mm RHS steel
 - One piece heavy duty construction
- Finishes**
- Hot dipped galvanised prior to coating
 - Primed and powder coated
 - (Available in many different colours. [See colour selector](#))
 - All fountains come with vandal resistant 316 stainless steel security screws
- Plumbing**
- In built water pressure regulator ½' inlet
 - 40mm Waste outlet pipe
- Options**
- Tap and dog bowl
 - Maintenance tap
 - Full parts and technical back up service available
 - Service kits available for purchase.



www.urbanff.com.au

Urban
fountains + furniture

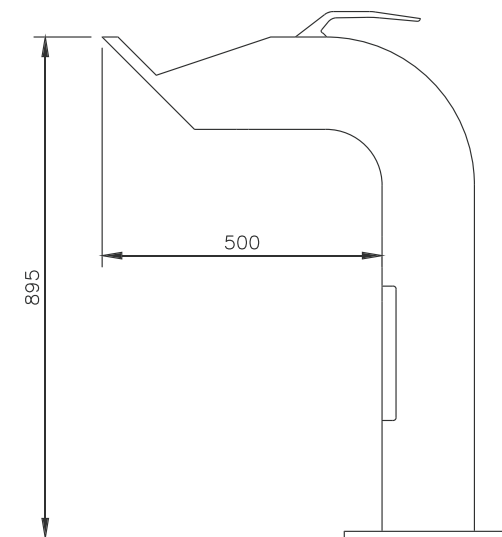
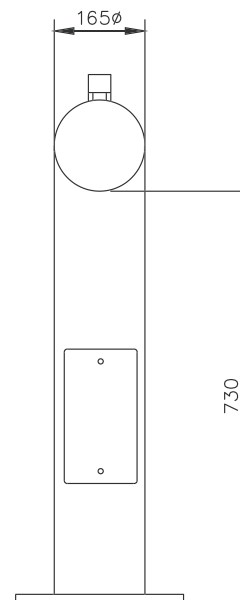
Drinking Fountain: Apollo 400

Evan Jackson | 08 8277 9382
sales@amsproducts.net.au
www.ams-products.com.au



The Apollo 400 is a durable, vandal resistant outdoor disabled accessible fountain. It is just one of our fountains in the Apollo range designed for disabled access.

- Dimensions**
- Total Height: 845mm
 - Clearance Height: 680mm
 - 165 OD Steel Pipe
 - One piece heavy duty construction
- Finishes**
- Hot dipped galvanised prior to coating
 - Primed and powder coated
(Available in many different colours. [See colour selector.](#))
 - All fountains come with vandal resistant 316 stainless steel security screws
- Plumbing**
- In built water pressure regulator ½' inlet
 - 40mm Waste outlet pipe
- Options**
- Tap and Dog Bowl
 - Maintenance tap
 - Full parts and technical back up service available.
 - Service kits available for purchase
 - Button activated



www.urbanff.com.au

Urban
fountains + furniture

Drinking Fountain: Apollo 600

Evan Jackson | 08 8277 9382
sales@amsproducts.net.au
www.ams-products.com.au



The Apollo 600 is a durable, vandal resistant Stainless Steel outdoor disabled accessible fountain. It is just one of our fountains in the Apollo range designed for disabled access. The Apollo 600 is a strong, robust and practical fountain.

Dimensions

- Total Height: 960mm
- Clearance Height: 750mm
- 165 OD steel pipe
- One piece heavy duty construction

Water Receptacle

- 275 OD - 316 stainless steel electropolished basin
- Nozzle material 316 stainless steel
- Stainless steel button activator

Plumbing

- In built water pressure regulator ½' inlet
- 40mm Waste outlet pipe

Finishes

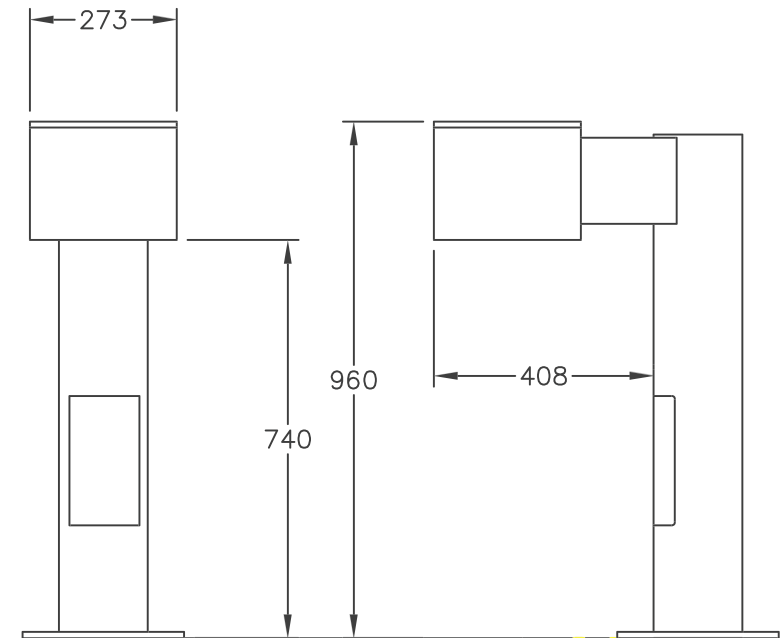
- Hot dipped galvanised prior to coating
- Primed and powder coated
(Available in many different colours. [See colour selector](#))
- All fountains come with vandal resistant 316 stainless steel security screws

Fixings

- Surface mounted with Dyna bolts or in ground fixings with foundation cage
- All bolts internal

Options

- Tap and dog bowl
- Maintenance tap
- Full parts and technical back up service available
- Service kits available for purchase



www.urbanff.com.au

Urban
fountains + furniture

Drinking Fountain: Apollo 800

Evan Jackson | 08 8277 9382
sales@amsproducts.net.au
www.ams-products.com.au



The Apollo 800 is a durable, vandal resistant Stainless Steel outdoor disabled accessible fountain. It is just one of our fountains in the Apollo range designed for disabled access.

Dimensions

- Total Height: 940mm
- Clearance Height: 870mm
- 316 Stainless Steel main body

Water Receptacle

- Unique mesh “no splash” catchment tray.
- Chrome nozzle
- Stainless Steel lever and handle.

Plumbing

- In built water pressure regulator ½' inlet
- 40mm Waste outlet pipe

Finishes

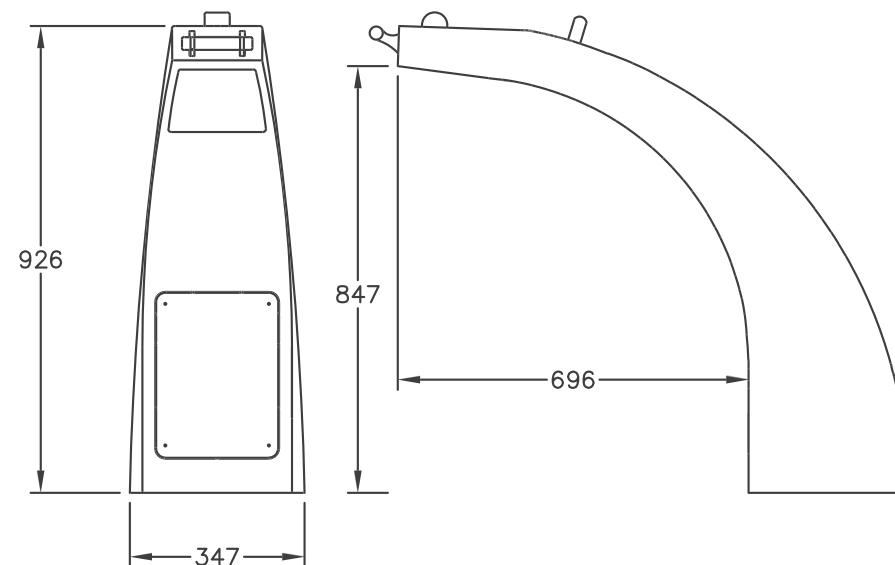
- Primed and powder coated
(Available in many different colours. [Please see colour selector](#))
- All fountains come with vandal resistant 316 stainless steel security screws.

Fixings

- Surface mounted with Dyna bolts or in ground fixings with foundation cage
- All bolts internal

Options

- Tap and Dog Bowl
- Maintenance tap
- Full parts and technical back up service available.
- Service kits available for purchase.
- Button activated
- Optional handle



W

CMA-WM-080042
WMTS-105:2016

Quality Certified
AU1228-QC

www.urbanff.com.au

Urban
fountains + furniture

Drinking Fountain: Apollo 880

The sleek new Apollo 880 stainless steel fountain features a uniquely curved angled body like no other design in the current market. Like all Urban's outdoor disabled accessible fountains, it is durable and vandal resistant. The Apollo 880 is the "big sister" to the Apollo 800, and follows on from that popular design. It retains many of the practical functionalities of that model with just a newer, more dynamic body design.

Evan Jackson | 08 8277 9382
sales@amsproducts.net.au
www.ams-products.com.au



Dimensions

- Total Height: 915mm
- Clearance Height: 846mm
- Base: 300mm x 200mm Tapered to top
- One piece heavy duty construction
- Easy access grab rail

Water Receptacle

- 316 Stainless steel basin
- Nozzle material 316 stainless steel
- Stainless steel easy action activator lever

Plumbing

- In built water pressure regulator ½' inlet
- 40mm Waste outlet pipe

Finishes

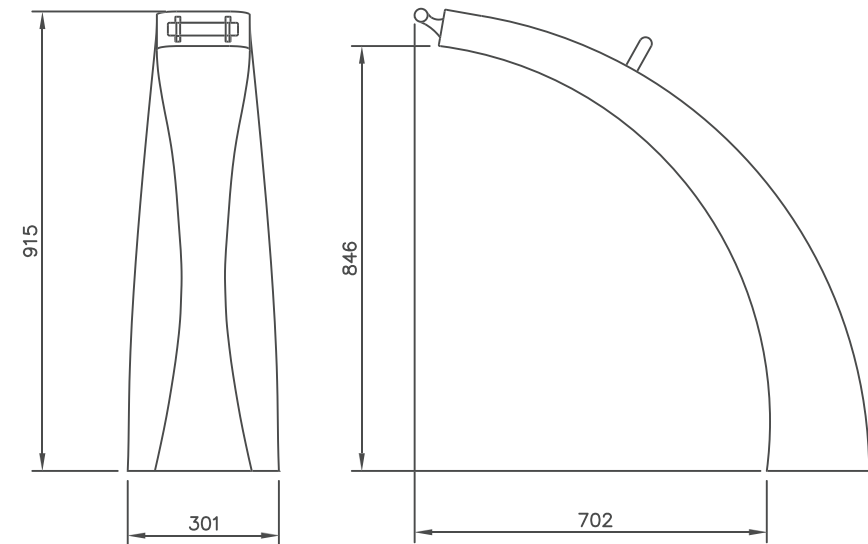
- Stainless steel finish
- Primed and powder coated
(Available in many different colours. [Please see colour selector](#))
- Anti graffiti

Fixings

- Surface mounted with Dyna bolts or in ground fixings with foundation cage
- All bolts internal
- All fountains come with vandal resistant 316 stainless steel security screws

Options

- Tap and dog bowl
- Full parts and technical back up service available
- Service kits available for purchase



www.urbanff.com.au

Urban
fountains + furniture

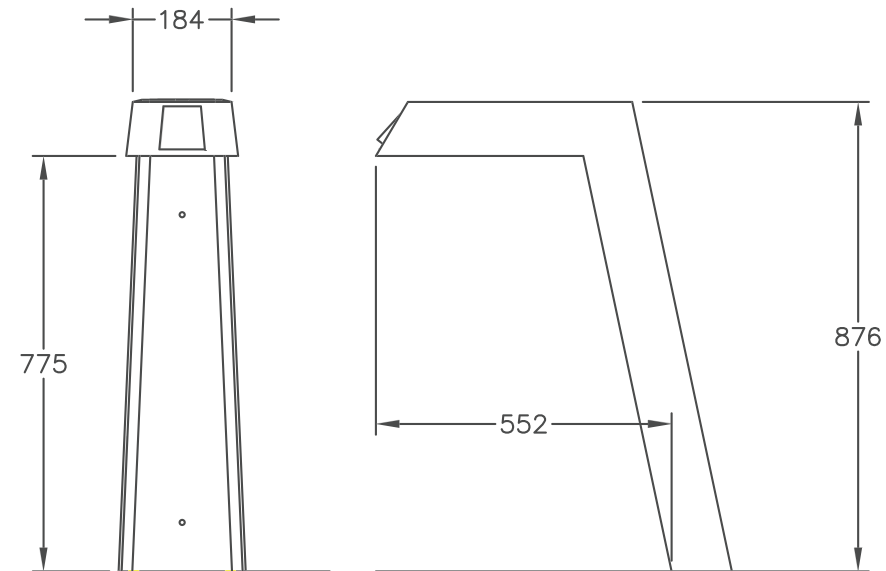
Drinking Fountain: Apollo 900

Evan Jackson | 08 8277 9382
sales@amsproducts.net.au
www.ams-products.com.au



The Apollo 900 is a new, sleekly formed stainless steel fountain with a uniquely tapered body and integrated basin. It is durable and vandal resistant like all our outdoor disabled accessible fountains. This "big brother" to the Apollo 300 keeps many of its practical functionalities with an updated body design.

- Dimensions**
- Total Height: 860mm
 - Clearance Height: 760mm
 - 200mm x 100mm tapered stainless steel
 - One piece heavy duty construction
- Plumbing**
- In built water pressure regulator ½' inlet
 - 40mm Waste outlet pipe
- Finishes**
- Primed and powder coated
(Available in many different colours. [See colour selector](#))
 - Stainless steel
 - All fountains come with vandal resistant 316 stainless steel security screws
- Options**
- Tap and Dog Bowl
 - Optional tap available
 - Full parts and technical back up service available.
 - Service kits available for purchase.



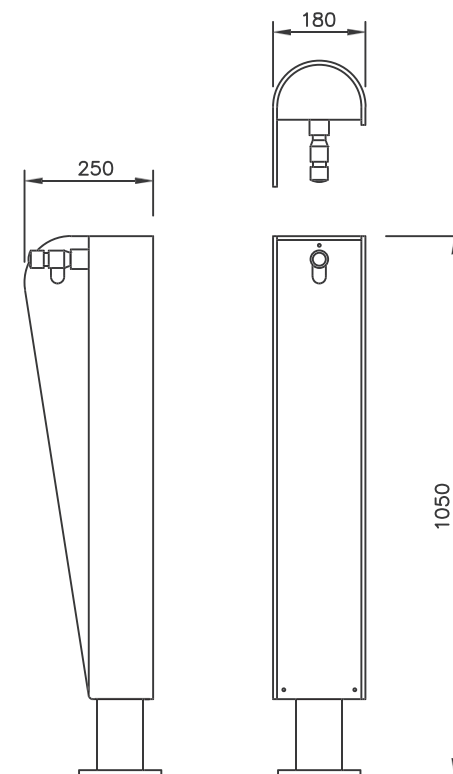
www.urbanff.com.au

Urban
fountains + furniture

Refill Fountain: BF200

The sleek new BF200 heavy duty steel water bottle filler is the no-brainer solution for today's bottled-water-consuming lifestyle. It gives the user real, practical access to water to refill their drink bottle without the usual struggle. Easy, convenient and with optional filter, the BF200 helps to reduce the production of plastic drink containers by encouraging reuse.

- Dimensions**
 - Total Height: 1050mm
 - Width: 180mm x 250 mm
 - 8mm steel one piece heavy duty construction
- Finishes**
 - Hot spray galvanised, primed and powder coated.
 - Available in many different colours
 - Stainless Steel insert and Filler nozzle
 - Vandal resistant 316 security screws
- Plumbing**
 - Carbon water filter
 - 1/2" inlet
 - Custom S/S filler nozzle
- Fixing Options**
 - Surface mounted with Dyna-bolts
 - Fixing cage
 - In-ground
- Options**
 - Tap and Dog Bowl
 - Additional water catchment tray
 - Maintenance tap
 - Carbon Filter
 - Logo embellishment



Evan Jackson | 08 8277 9382
sales@amsproducts.net.au
www.ams-products.com.au



www.urbanff.com.au

Urban
fountains + furniture

Drinking Fountain: BF200W

Evan Jackson | 08 8277 9382
sales@amsproducts.net.au
www.ams-products.com.au



The BF200W Wall Mounted Bottle Filler is compact, strong and robust. It is easy to use and ideal for Schools or recreational areas. Urban's outdoor wall mounted fountain gives the user access to water so they can refill their bottle encouraging the reduction in plastic waste. Available in standard size or shorter version.

BF200W - Standard

- Dimensions**
 - Total Height: 353mm
 - Width: 166mm
 - 8mm steel one piece heavy duty construction
- Plumbing**
 - 1/2" water inlet
 - Custom S/S filler nozzle
- Finishes**
 - Hot spray galvanised, primed and powder coated
 - Available in many different standard colours.
 - Stainless steel insert and filler nozzle
 - Vandal resistant 316 security screws
- Fixings**
 - Wall mounted
- Options**
 - Carbon filter available (in standard size only)
 - Logo or motif

BF200W - Short

- Dimensions**
 - Total Height: 150mm
 - Width: 135mm
 - 8mm steel one piece heavy duty construction
- Plumbing**
 - 1/2" water inlet
 - Custom S/S filler nozzle
- Finishes**
 - Hot spray galvanised, primed and powder coated
 - Available in many different standard colours.
 - Stainless steel insert and filler nozzle
 - Vandal resistant 316 security screws
- Fixings**
 - Wall mounted
- Options**
 - Logo or motif

Standard Size



Shorter Size



www.urbanff.com.au

Urban
fountains + furniture

Chiller Fountain: CF200

Evan Jackson | 08 8277 9382
sales@amsproducts.net.au
www.ams-products.com.au



The CF200 chiller fountain has been designed to withstand the harsh Australian climate. This versatile fountain also incorporates a bottle filler to fill water bottles with fresh, cool, filtered water. Built to Urban's usual high standard taking into account the need to reduce the risk of potential vandalism and the harsh environmental climate, the CF200 chiller fountain is perfectly designed for your outdoor space.

Dimensions

- Total Height: 992mm
- 769mm x 370mm base

Water Receptacle

- 316 stainless steel catchment tray
- Nozzle material 316 stainless steel
- Easy push button water activator

Plumbing

- 1/2 water inlet
- 40mm waste outlet pipe
- chilling capacity 26 litres per hour

Electrical

- Access to power required

Finishes

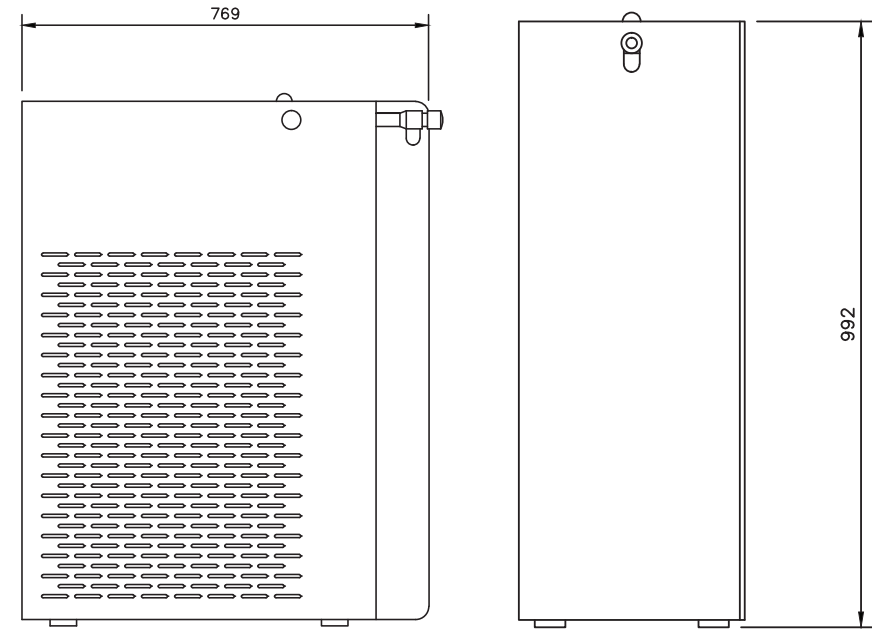
- Steel and Stainless Steel
- Hot spray galvanised and Powder coated
(Available in many different colours. [Please see colour selector.](#))
- Anti graffiti available on request

Fixings

- Surface mounted with Dyna bolts or in ground fixings with foundation cage
- All internal bolts
- 316 Stainless steel security screws

Options

- Optional tap, dog bowl & water filter available
- Logo or motif



www.urbanff.com.au

Urban
fountains + furniture

Pet // Drinking Fountain: PF400

Evan Jackson | 08 8277 9382
sales@amsproducts.net.au
www.ams-products.com.au



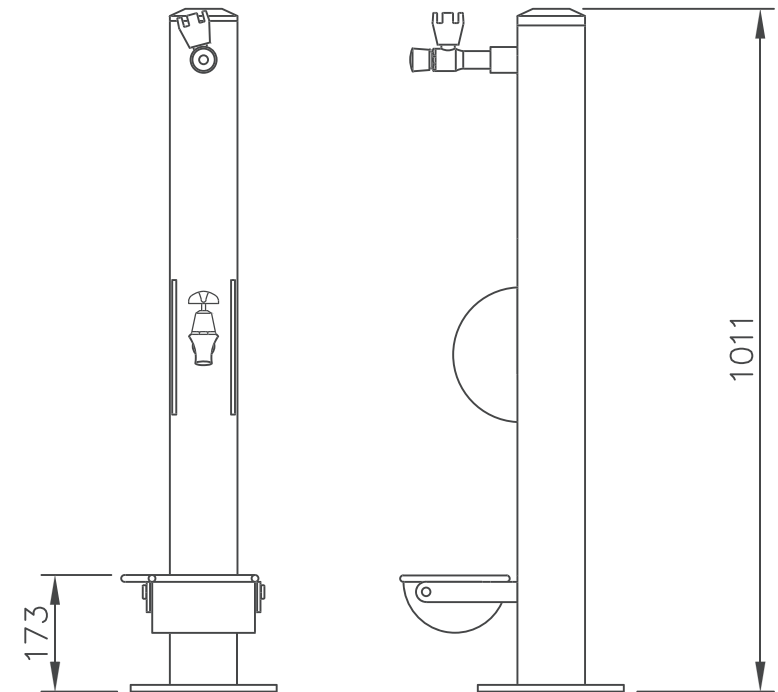
The PF 400 is a strong and robust standard upright fountain for parks, schools and any outdoor environment. It is not suitable for disabled access.

- Dimensions**
- Height: 1011mm
 - Width: 100mm
 - Dog bowl height: 173mm

- Materials**
- Steel RHS main body
 - 316 S/S dog bowl
 - Chrome activator button
 - Chrome bubbler and tap

- Finishes**
- Hot spray galvanised
 - Primed and Powdercoated
(Available in many different colours. [See colour selector](#))

- Options**
- Dog leash handles
 - Maintenance tap
 - Anti vandal tap shrouds



www.urbanff.com.au

Urban
fountains + furniture

Drinking Fountain: PF450

The PF450 is a contemporary stylish and sleek pet accessible fountain ideal for dog off leash areas, council parks, schools and any outdoor public space.

Evan Jackson | 08 8277 9382
sales@amsproducts.net.au
www.ams-products.com.au



Dimensions

- Total Height: 1000mm
- Width: 200mm
- Depth: 112mm

Materials

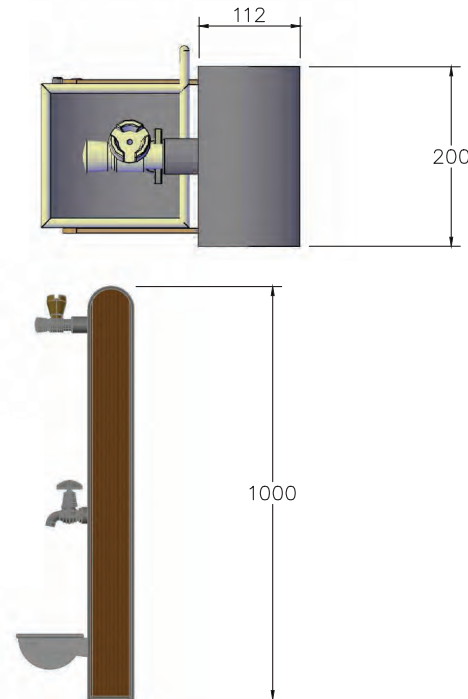
- 6mm thick steel plate
- Recycled Plastic composite side panels (available in 3 colours - Mocha, Slate Grey and Cedar)
- 316 S/S custom designed dog bowl and fittings

Finishes

- Hot Spray Galvanised and Powder Coated in Dulux Duratec Range
- Hot Dipped Galvanised only finish

Options

- Bottle Filler
- Catchment tray (under bottle refill)
- Maintenance tap
- Tap shrouds
- S/S side panels with etching
- Powdercoated side panels with artwork



**example of optional custom artwork side panel



www.urbanff.com.au

Urban
fountains + furniture

Pet // Drinking Fountain: PF600

Evan Jackson | 08 8277 9382
sales@amsproducts.net.au
www.ams-products.com.au



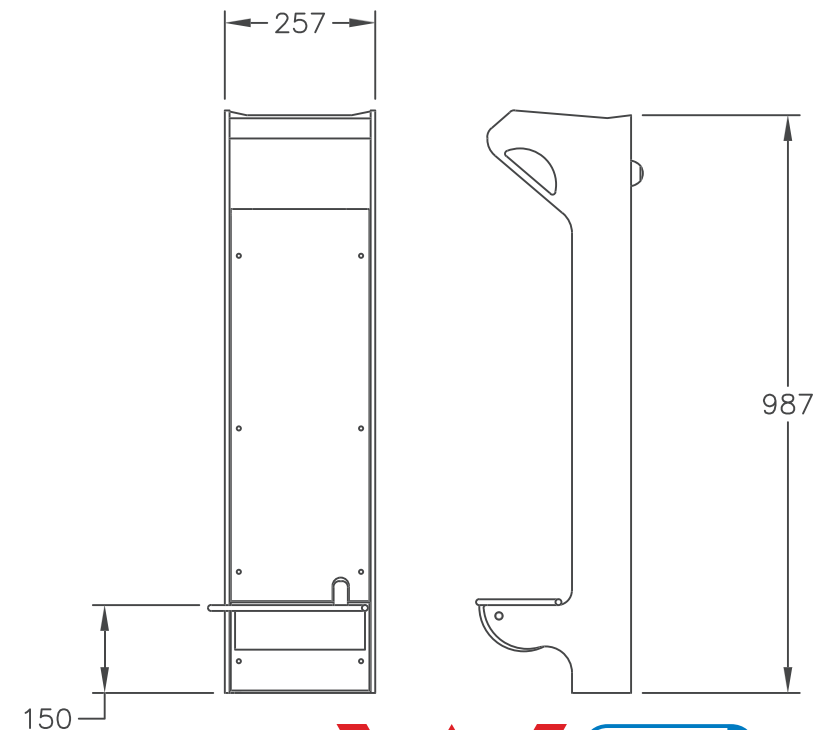
Our pet accessible fountain enables dog lovers to provide fresh drinking water for their dogs whilst out in public places. The PF 600 is becoming increasingly popular with local councils for use in their off leash areas in parks providing water for owners and their dogs.

The common “post bubblers” with tap attachments, usually with a plastic bowl placed by a considerate dog owner, is unsightly and will soon be a thing of the past with the introduction of the PF 600. Excess water is directed in to the dog bowl which can be emptied by a simple tipping of the bowl.

- Dimensions**
- Total height: 987mm
 - Width: 257mm
 - Dog bowl height: 150mm

- Finishes**
- Hot spray galvanised
 - Primed and Powdercoated
- (Available in many different colours. [See colour selector](#))

- Options**
- Maintenance tap
 - Stainless steel



www.urbanff.com.au

Urban
fountains + furniture

Drinking Fountain: SU600

The SU 600 is a strong and robust standard upright fountain for parks, schools and any outdoor environment. It is not suitable for disabled access.

Dimensions

- Total Height: 1000mm
- Diameter: 275mm
- 5mm steel body

Finishes

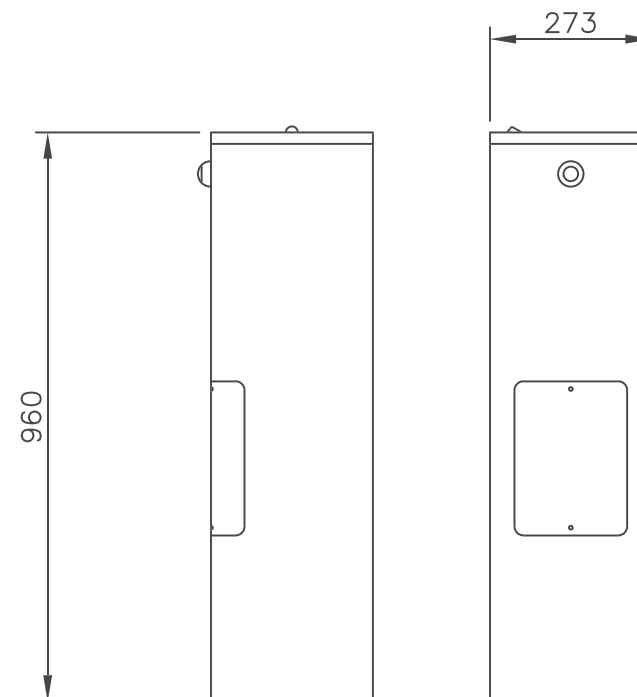
- Hot dipped galvanised prior to coating
- Primed and Powder Coated
(Available in many different colours. [See colour selector](#))
- All fountains come with vandal resistant 316 stainless steel security screws.

Plumbing

- In built water pressure regulator ½' inlet
- 40mm Waste outlet pipe

Options

- Tap and Dog Bowl
- Maintenance tap
- Optional handle
- Full parts and technical back up service available
- Service kits available for purchase



www.urbanff.com.au

Urban
fountains + furniture

Drinking Fountain: A280

Evan Jackson | 08 8277 9382
sales@amsproducts.net.au
www.ams-products.com.au



The Apollo 280 combines all the features, design and versatility of the new BF200 refill fountain with the more traditional features of our standard Apollo range. It comes with the option of the longer basin making the A280 more disabled accessible and user friendly. With its newly designed stainless steel basin and a stainless steel feature front panel, the Apollo 280 is not only practical but very stylish and will compliment any contemporary urban streetscape

Dimensions

- Total Height: 900mm
- Clearance Height: 800mm
- 191mm x 160mm base

Water Receptacle

- 316 stainless steel catchment tray
- Nozzle material 316 stainless steel
- Easy push button water activator

Plumbing

- 1/2 water inlet
- 40mm waste outlet pipe

Finishes

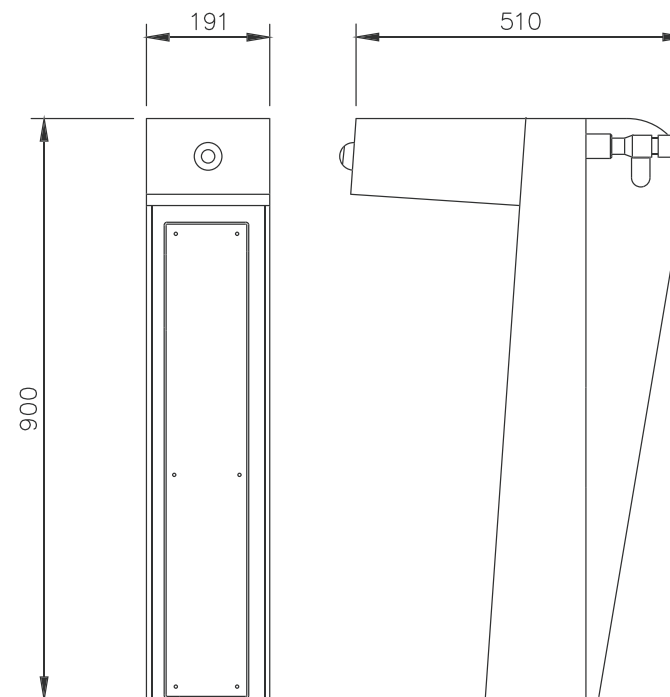
- Primed and Powder coated finish
(Available in many different colours. Please see colour selector)
- Stainless Steel
- Anti graffiti (available on request)

Fixings

- Surface mounted with Dyna bolts or in ground fixings with foundation cage
- All internal bolts
- 316 Stainless steel security screws

Options

- Optional tap and dog bowl
- Optional catchment tray
- Water filter
- Logo or motif
- Longer or shorter basin
- Optional side protection panels



www.urbanff.com.au

Urban
fountains + furniture